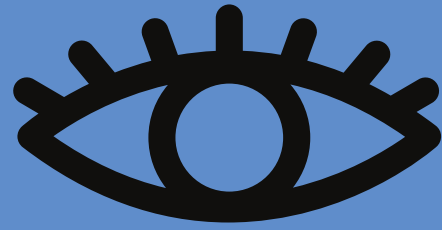




empower learn succeed

FREMANTLE EDUCATION CENTRE CERTIFICATE IV IN COMMUNITY SERVICES

RTO CODE: 50354



ARE YOU A JOBSEEKER WITH PRIOR INDUSTRY TRAINING?

TRAINING AVAILABLE IN FREMANTLE



BECOME WORK READY

The course will run at FEC and enrolments are open for commencement on the 15th March 2021 with rolling intake



REAL HANDS ON LEARNING

Practical placement within a school to be undertaken at various stages of the course

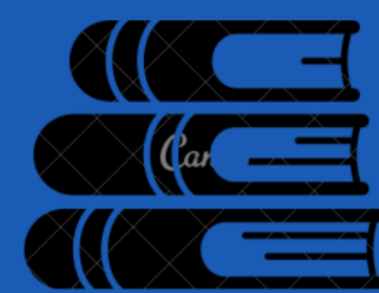


COST

The cost of the course \$1200
Commission aged between 18-24 = \$400

The student tuition fee are indicative only are subject to change given individual circumstances at enrolment. Additional fees may apply such as student service & resource fees.

*Note this is the capping for 2021 only.



STUDY

Study will take place over 3 days a week, Monday, Tuesday, Wednesday (excluding school holidays)

Course Times: 9:00 - 3:00

BOOK YOUR PLACE TODAY!

succeed@fec.org.au



RTO: 50354 | Tel: (08) 9335 5444 | Fax: (08) 9335 5656
| Email: succeed@fec.org.au | website: www.fec.org.au